

A gloved hand is shown operating a restraint socket on a building facade. The socket is a circular metal component with a central rod and a locking mechanism. The background is a textured, light-colored wall.

Restraint Sockets

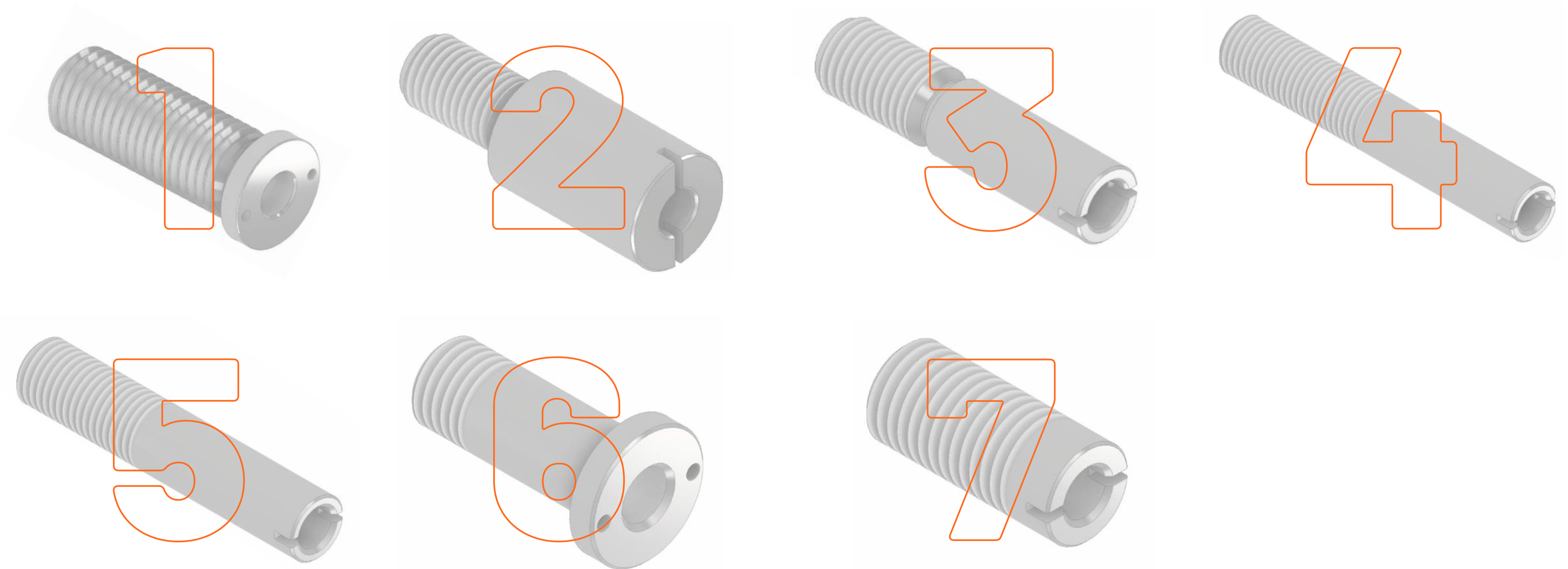
Enhancing Access, Safety & Efficiency
in High-Rise Building Maintenance

IntegralCradles GIND | UK

DESIGN • MANUFACTURE • INSTALLATION • MAINTENANCE

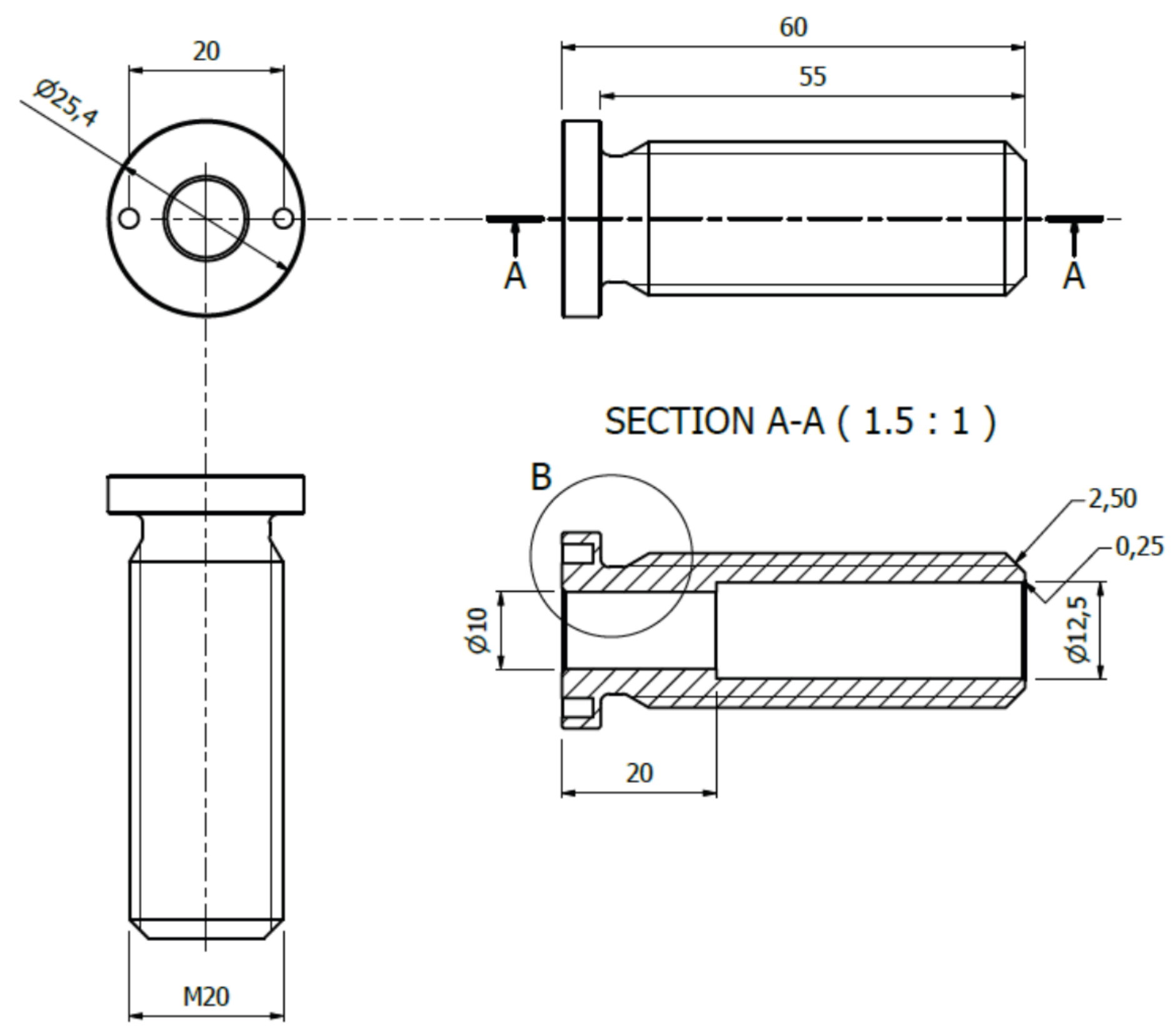
Our Main Restraint Socket Types:

All our restraint sockets are designed to securely lock the restraint pin inside in order to restrain the BMU cradle, preventing unwanted movements and enhancing safety for maintenance activities of the building façade.



1. Restraint Socket

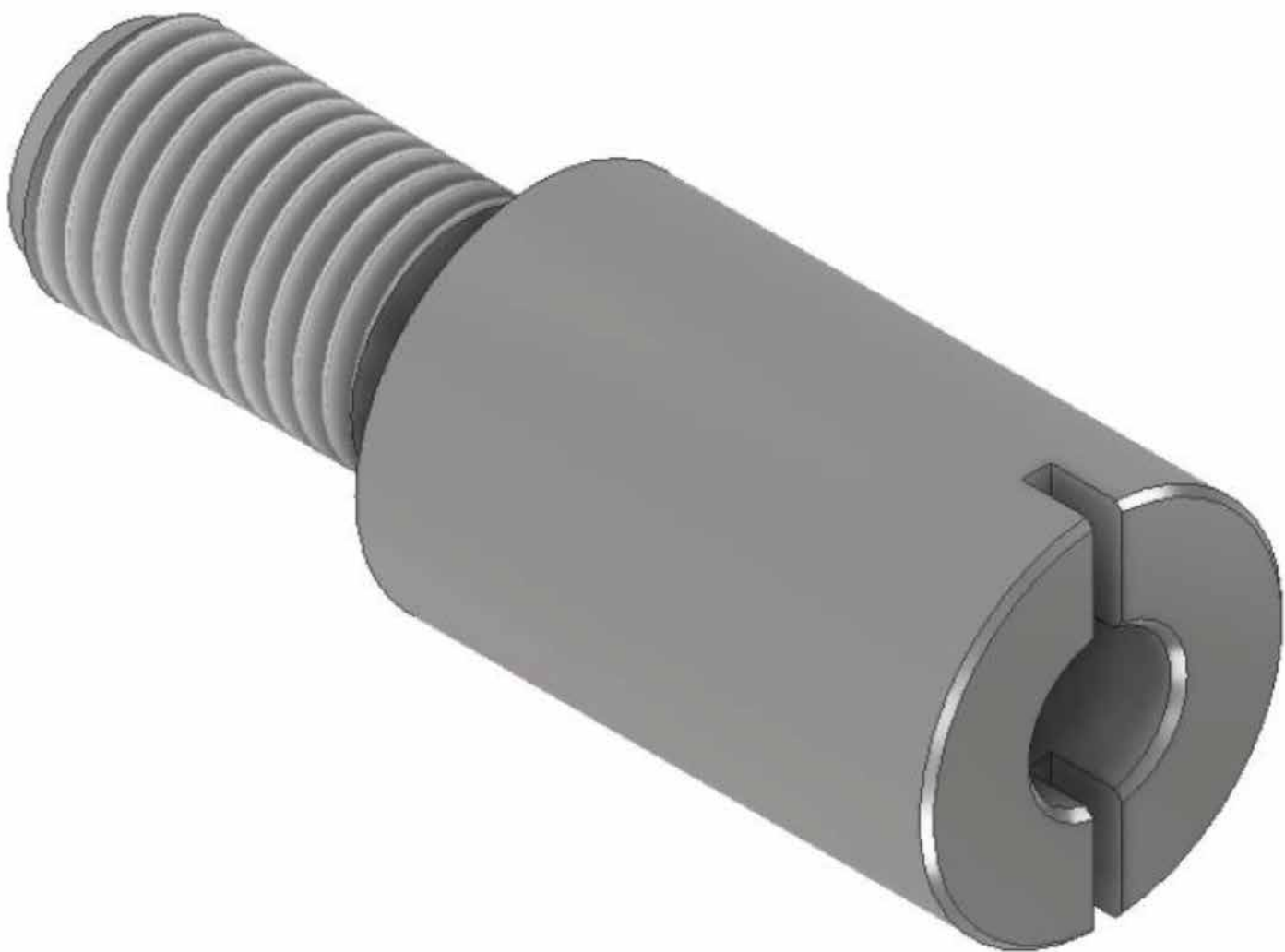
M20 x 60mm | 1.0kN



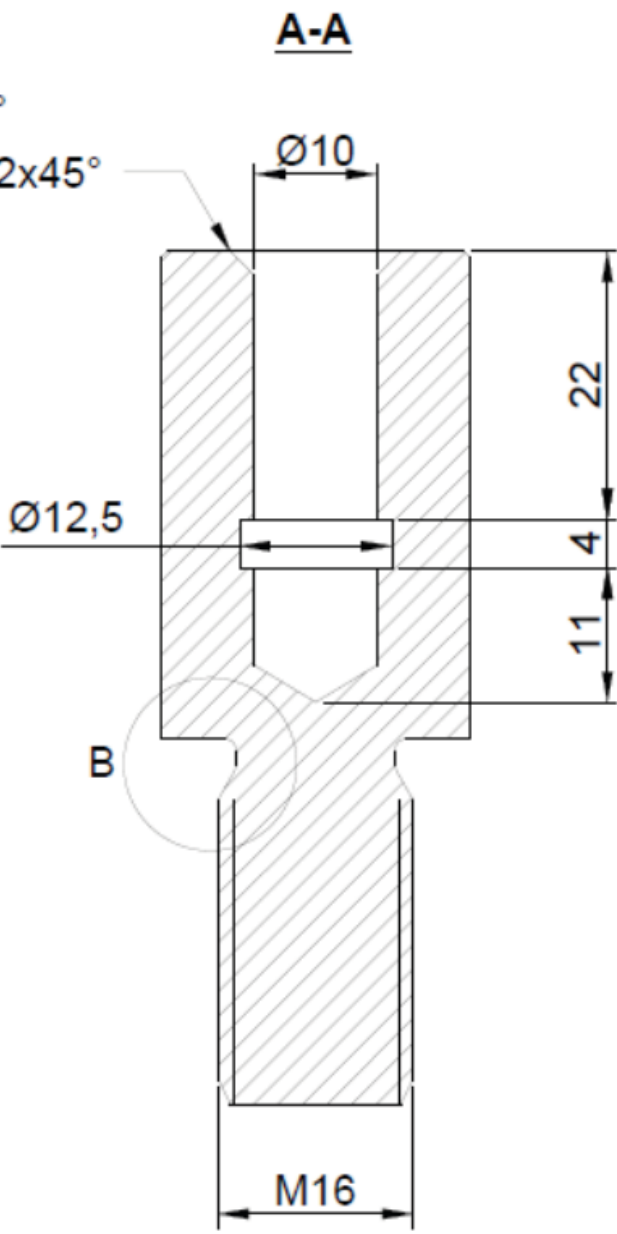
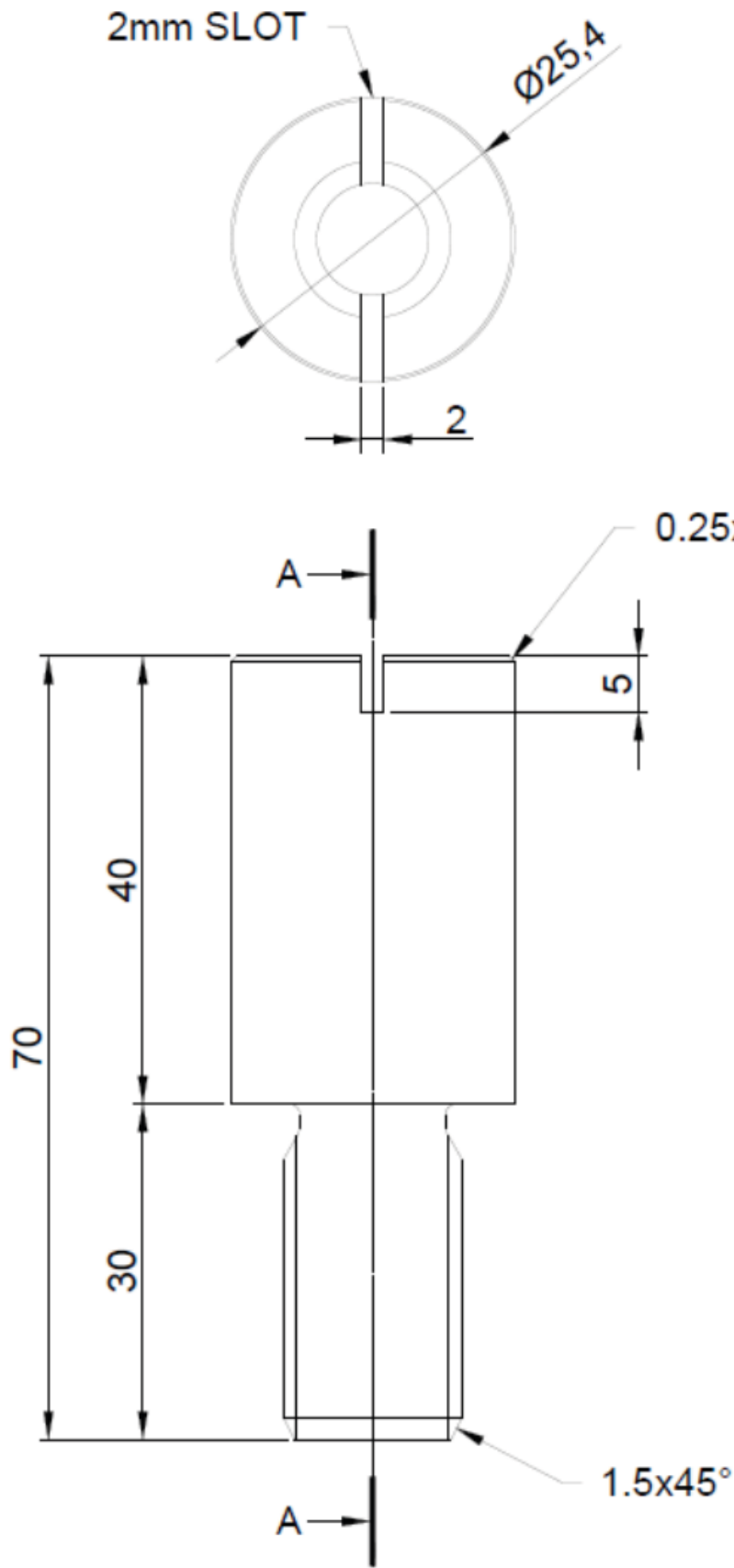
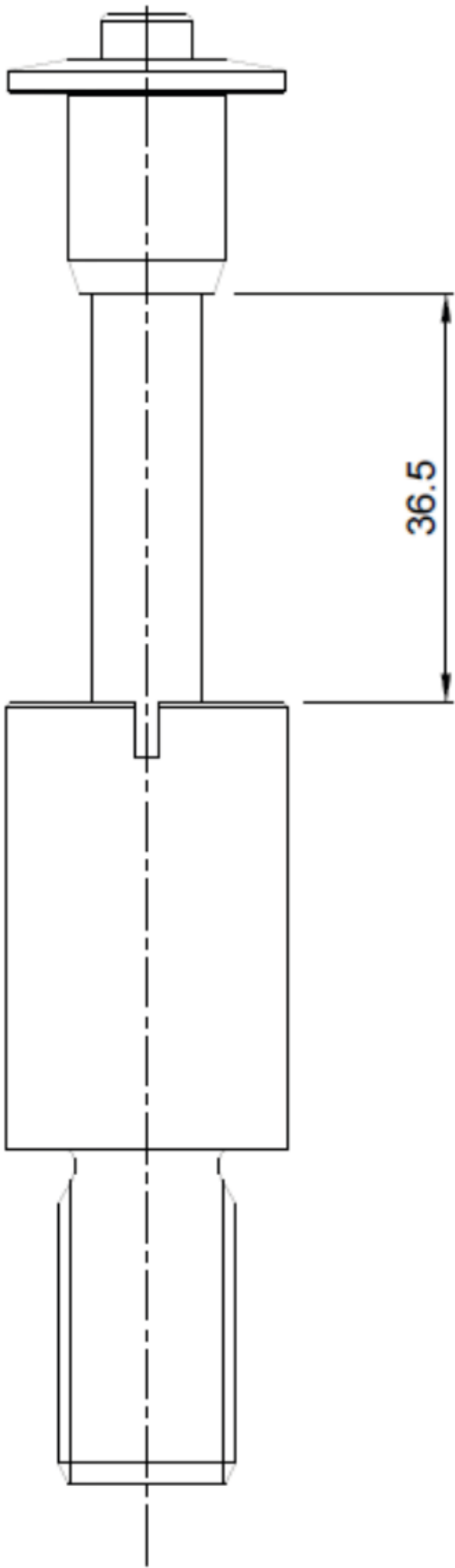
REF. Number	ICL-RS-FAB-013
Materials	A4-80 Stainless Steel
Details	The wider flange can accommodate a seal (not provided by ICL) to prevent water ingress, making it suitable for installation in building facades where waterproofing is critical

2. Restraint Socket

M16 x 30mm | 1.0kN



REF. Number	ICL-RS-FAB-016
Materials	A4-80 Stainless Steel
Details	The wider flange can accommodate a seal (not provided by ICL) to prevent water ingress, making it suitable for installation in building facades where waterproofing is critical, with longer head



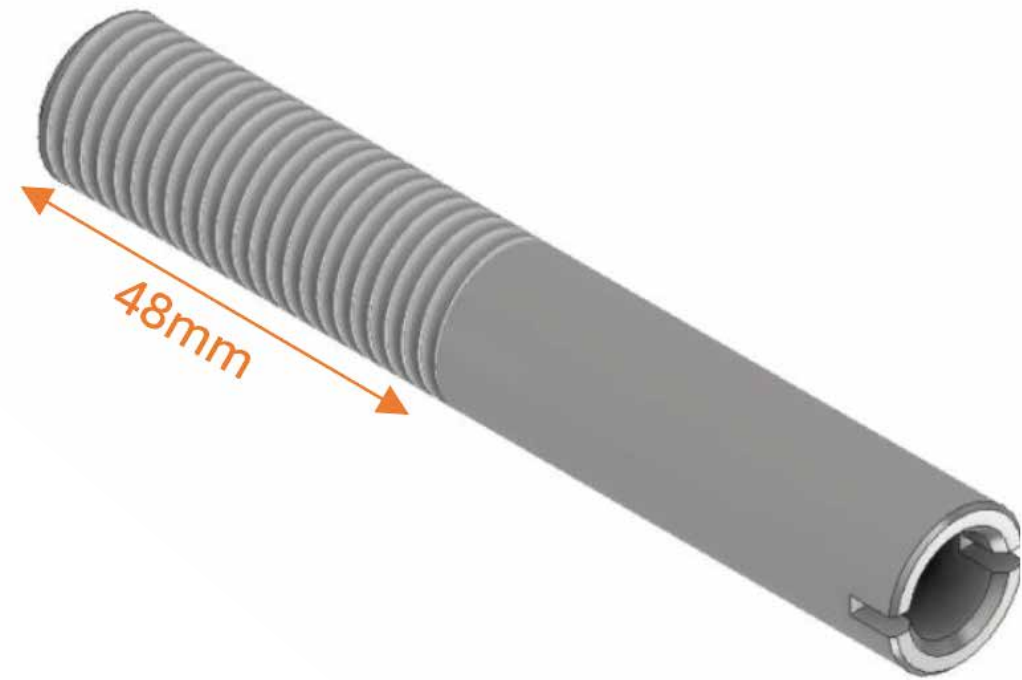
3. Restraint Socket

M16 x 70mm | 1.0kN



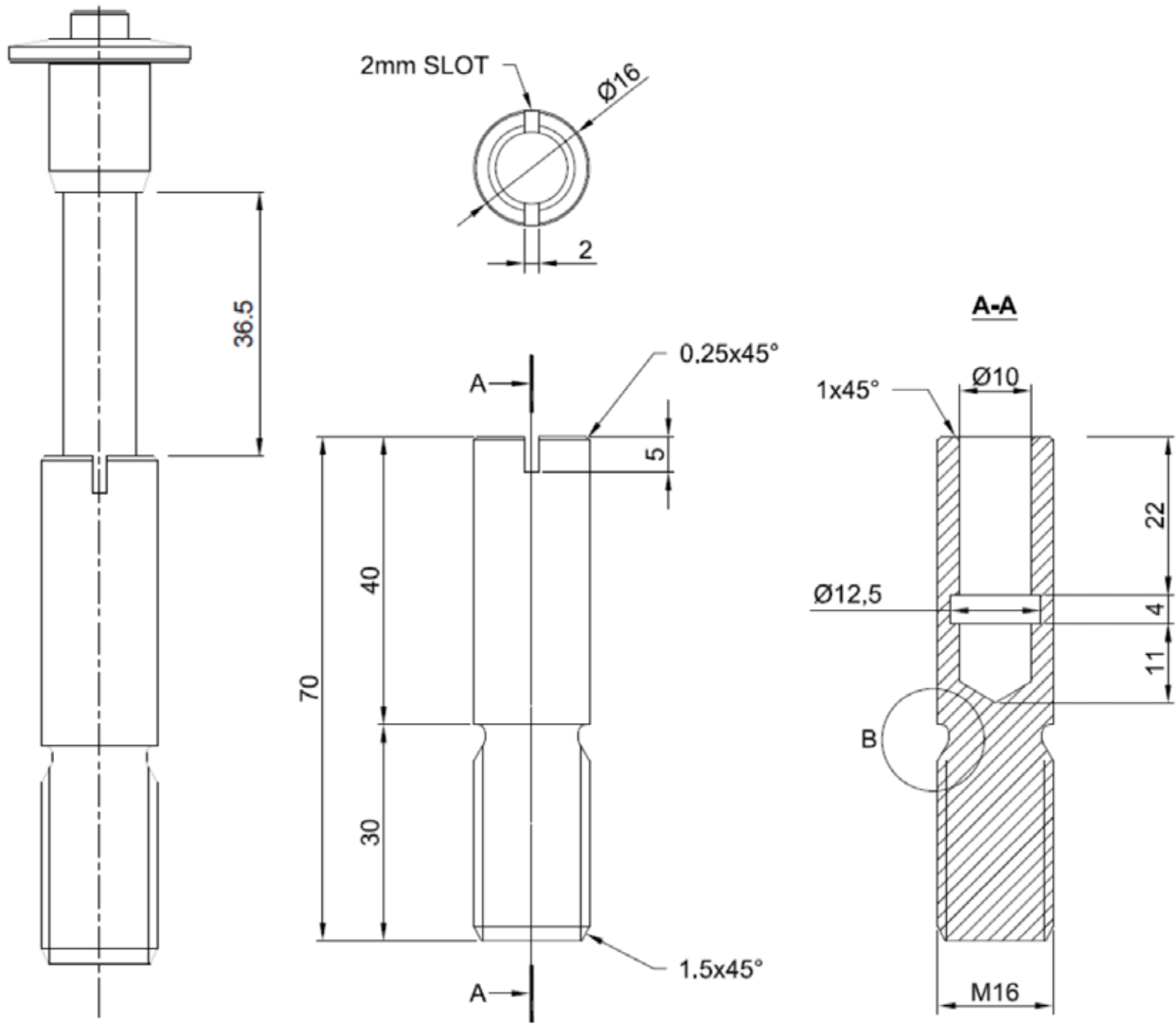
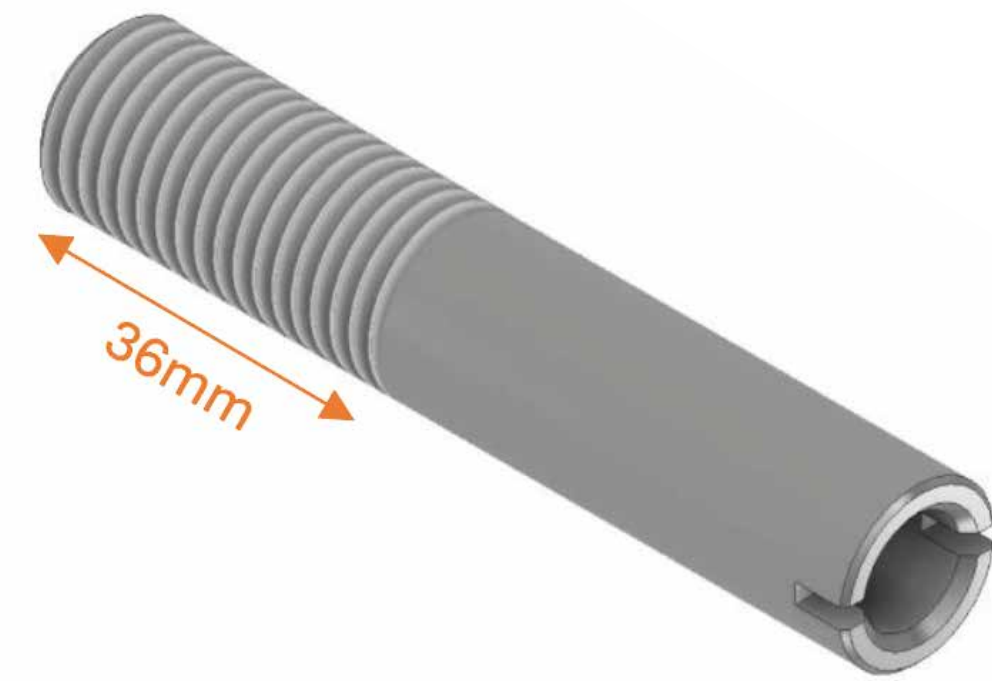
4. Restraint Socket

M16 x 102mm | 1.5kN



5. Restraint Socket

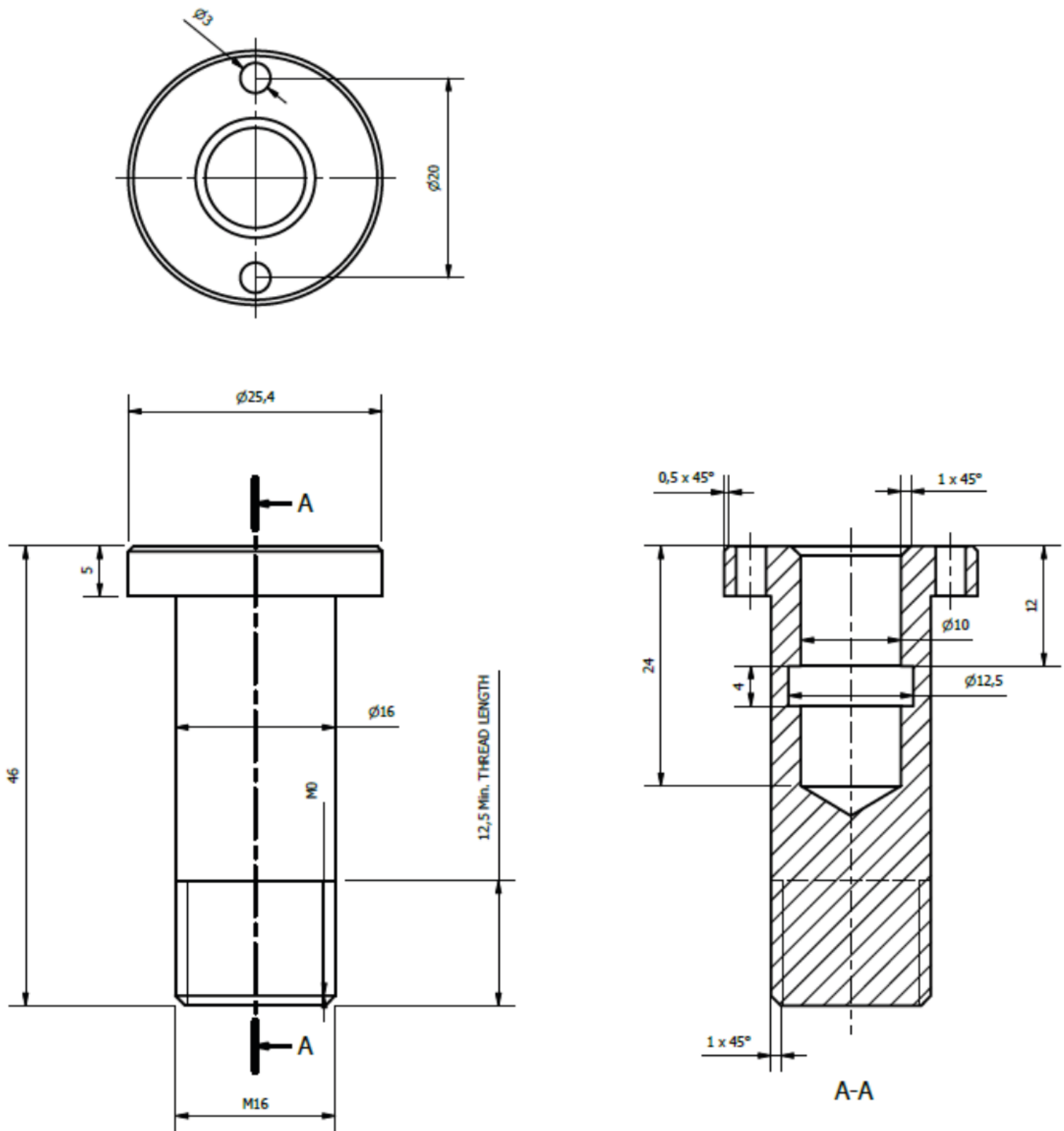
M16 x 84mm | 1.5kN



REF. Number	(3) ICL-RS-FAB-017, (4) ICL-RS-FAB-018, (5) ICL-RS-FAB-019
Materials	A4-80 Stainless Steel
Details	The threaded section of the socket is securely fastened into the building façade positioned flash with the cladding.

6. Restraint Socket

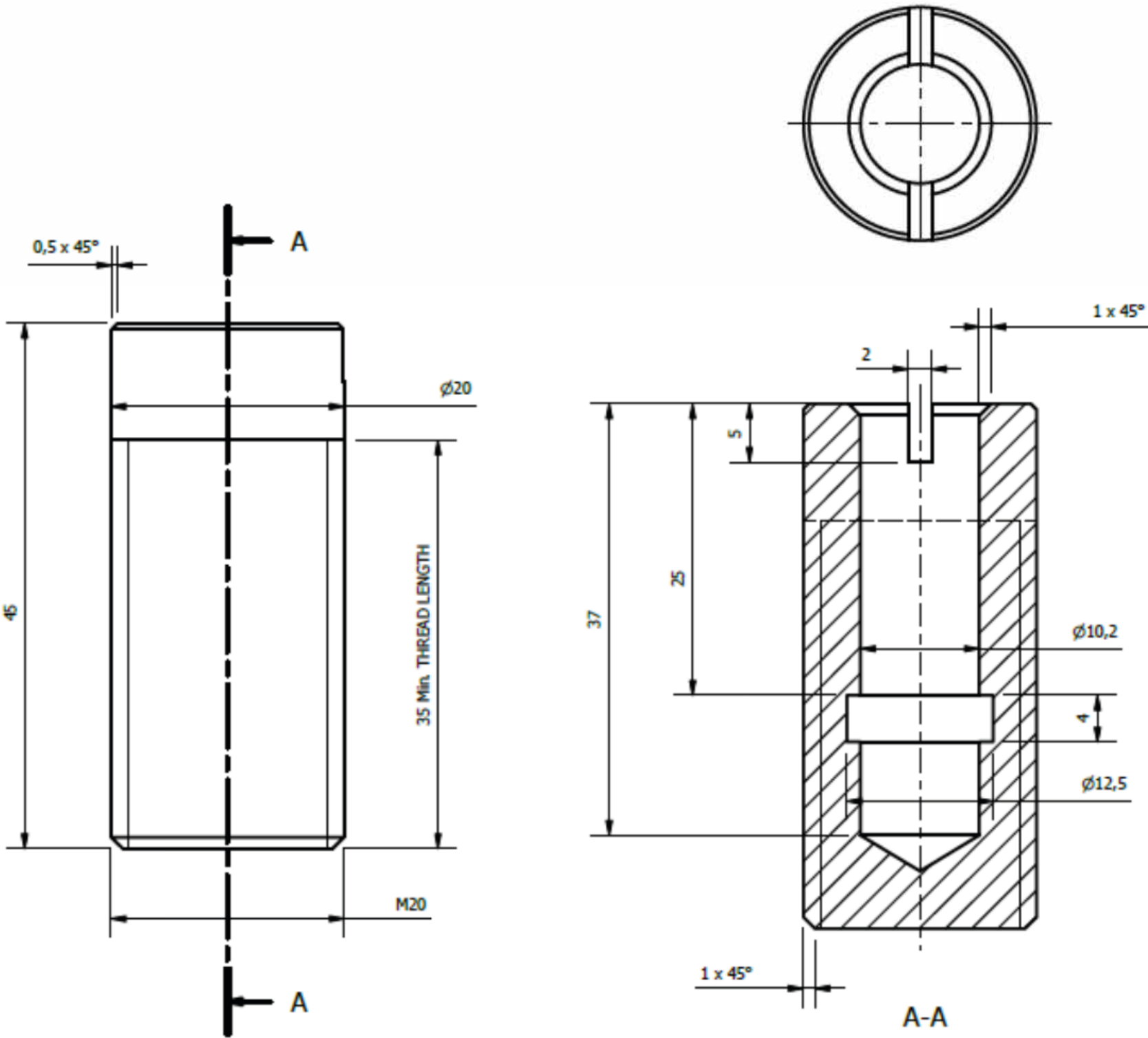
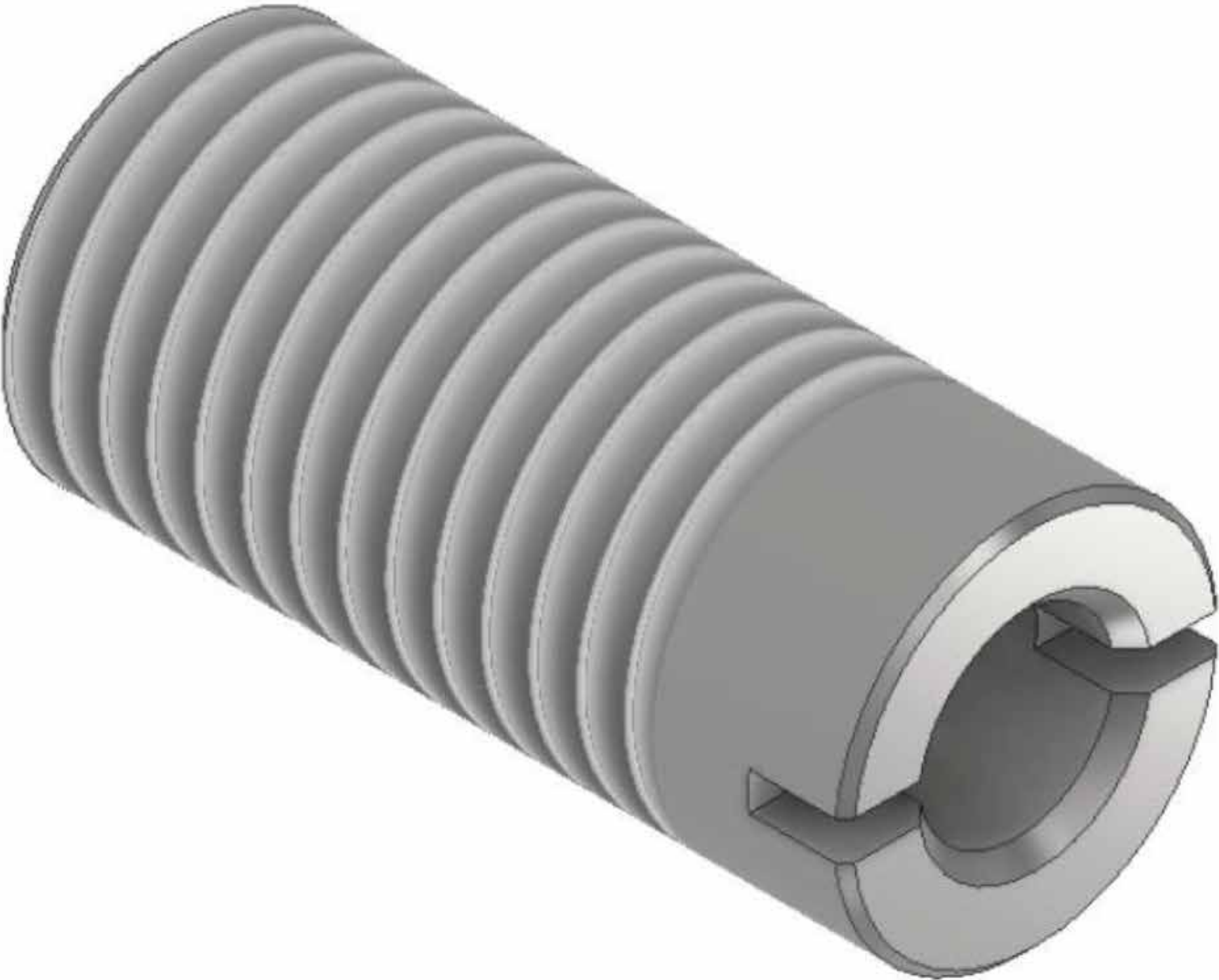
M16 x 46mm | 1.5kN



REF. Number	ICL-RS-FAB-0021
Materials	A4-80 Stainless Steel
Details	The wider flange can accommodate a seal (not provided by ICL) to prevent water ingress, making it suitable for installation in building facades where waterproofing is critical

7. Restraint Socket

M20 x 45mm | 1.5kN



REF. Number	ICL-RS-FAB-0024
Materials	A4-80 Stainless Steel
Details	Threaded cylindrical body

How to contact us

Integral Cradles Ltd / GIND UK

The Beehive Building

Beehive Ring Rd

Gatwick

RH6 0PA

0845 074 2758 | 0800 448 8884

www.i-cradles.com | www.gind.uk

IntegralCradles GIND | UK

DESIGN • MANUFACTURE • INSTALLATION • MAINTENANCE