Three construction workers are standing on a high-rise building site. They are wearing safety helmets, glasses, and high-visibility vests. The worker on the left is wearing a white helmet and a green vest. The worker in the middle is wearing a black helmet, sunglasses, and a green vest with 'IntegralCradles' written on it. The worker on the right is wearing a white helmet and a green vest. They are all smiling and looking towards the camera. The background shows the structure of a high-rise building under construction.

HD Bolts Installation & Inspection Procedure

Enhancing Access, Safety & Efficiency
in High-Rise Building Maintenance

IntegralCradles GIND | UK

DESIGN • MANUFACTURE • INSTALLATION • MAINTENANCE

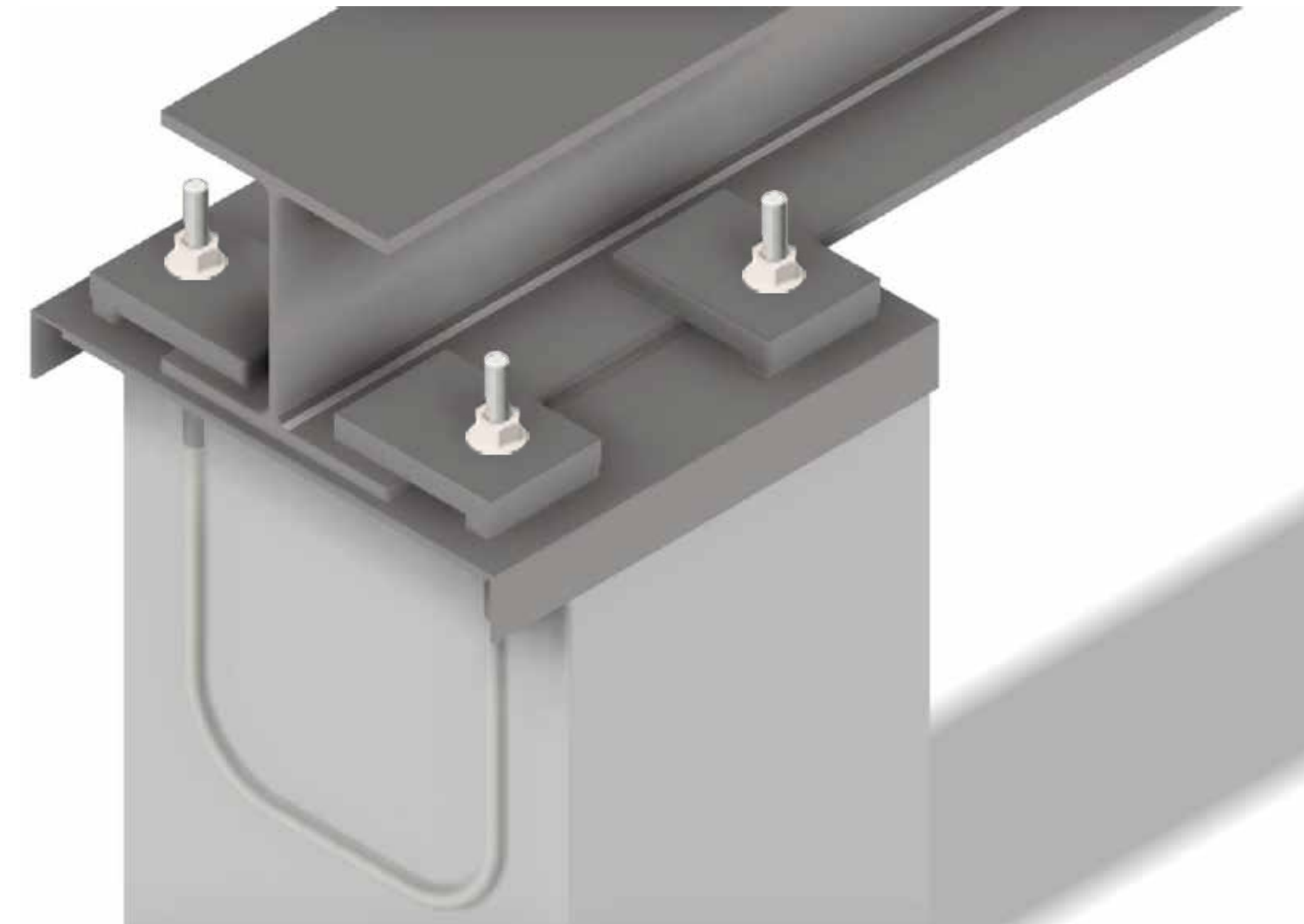
Recommended Plinth Detail

The document details the recommended concrete plinth detail, installation sequence and inspection regime. If procedure within this document is followed, then the LOLER Inspector has a reduced requirement to internally inspect the plinths in future.

There is a Safed LG3 requirement of exposing 5% of the plinths after 10 years, unless this procedure has been followed and Stainless Steel anchor bolts used. If this procedure is followed there would be a requirement to just inspect one plinth in 10 years, if deemed necessary. However this unlikely as ultrasonic testing would be used instead.

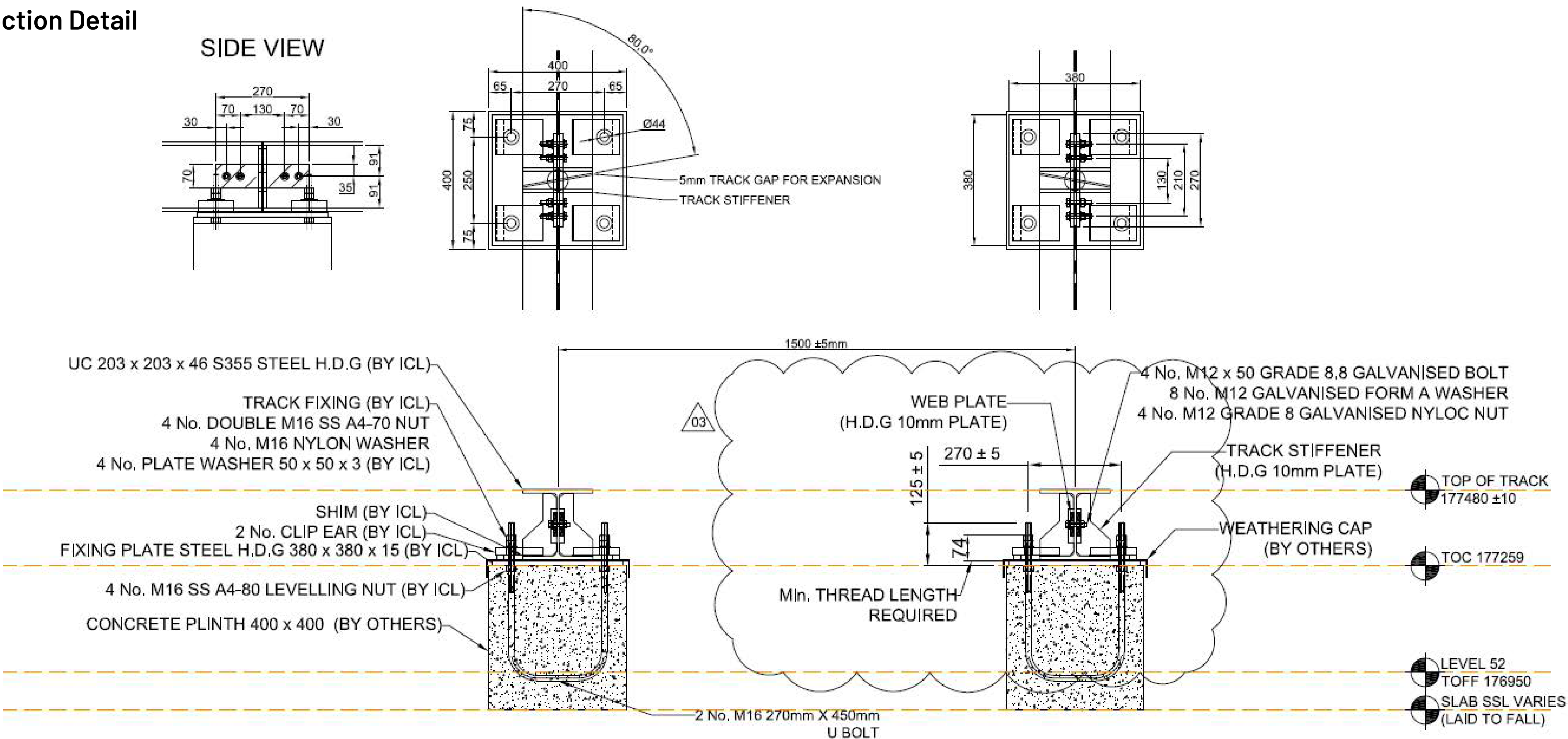
Installation Sequence / Inspection Regime:

- | | |
|---|--|
| 1 Ustand HD bolts with bed plate free issued to concrete contractor. | 5 LOLER inspection of plinth, rebar, bed plates and HD bolts. |
| 2 Ustand starter bars are installed into rebar mat by others. | 6 Concrete is poured for concrete plinths. |
| 3 LOLER inspection of starter bars. | 7 Waterproofing and insulation installed around the concrete plinths (by others). |
| 4 Plinths are formed and upstand bolts installed by others to a specified tolerance. | 8 Track Installed by ICL engineers. |



Typical Plinth Detail

Connection Detail



Recommended Plinth Detail

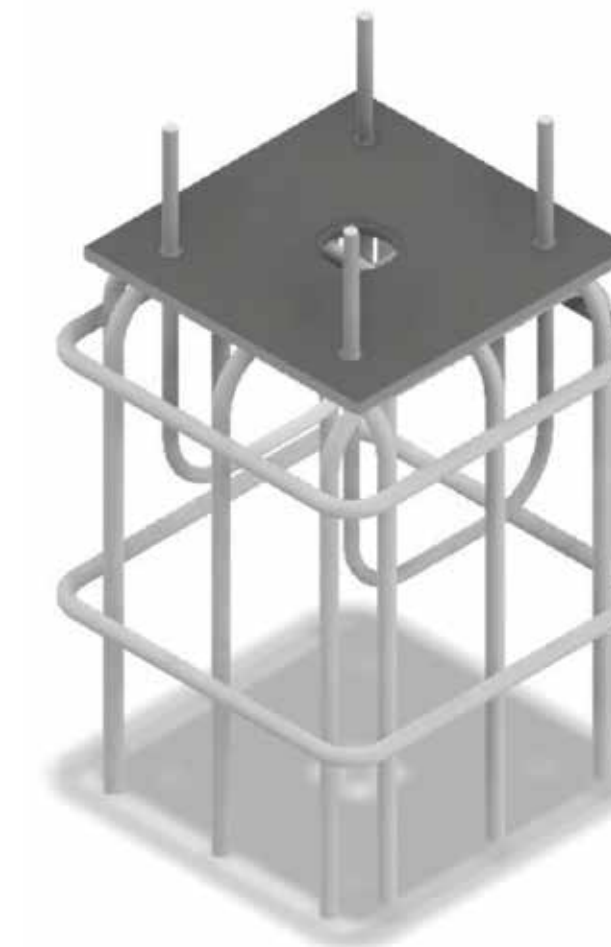
Photographs taken during installation / survey visits



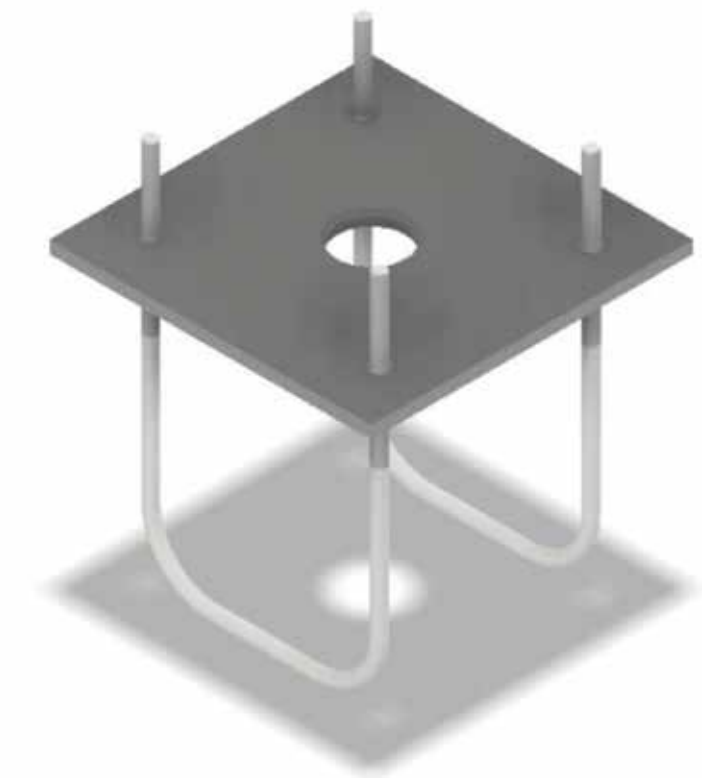
LOLER Inspection carried out



Main slab poured with typical formed upstand starter bars showing



Typical setting out board installed on shuttering



Typical 'U' bars fixed to setting out board ('U' bars can be supplied)

Recommended Plinth Detail

Photographs taken during installation / survey visits



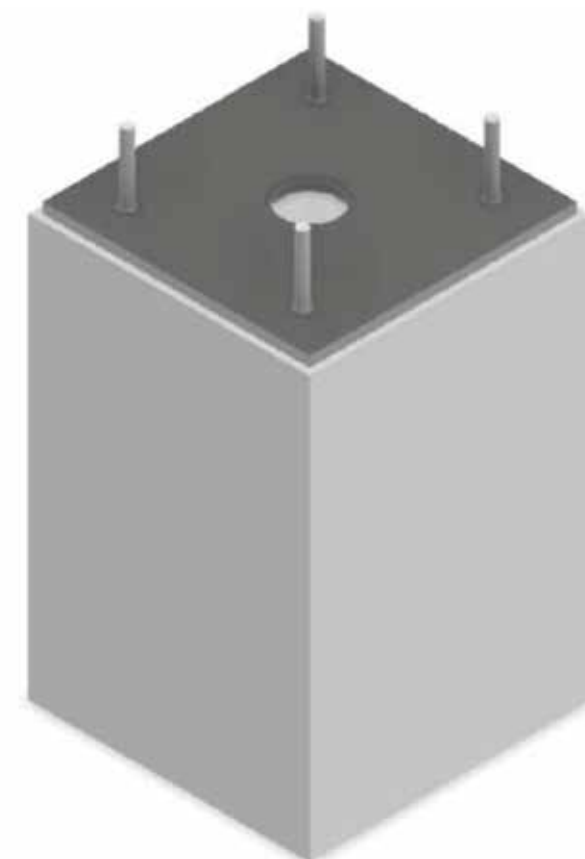
Alignment checked before pouring



Bed plate installed and grouted in



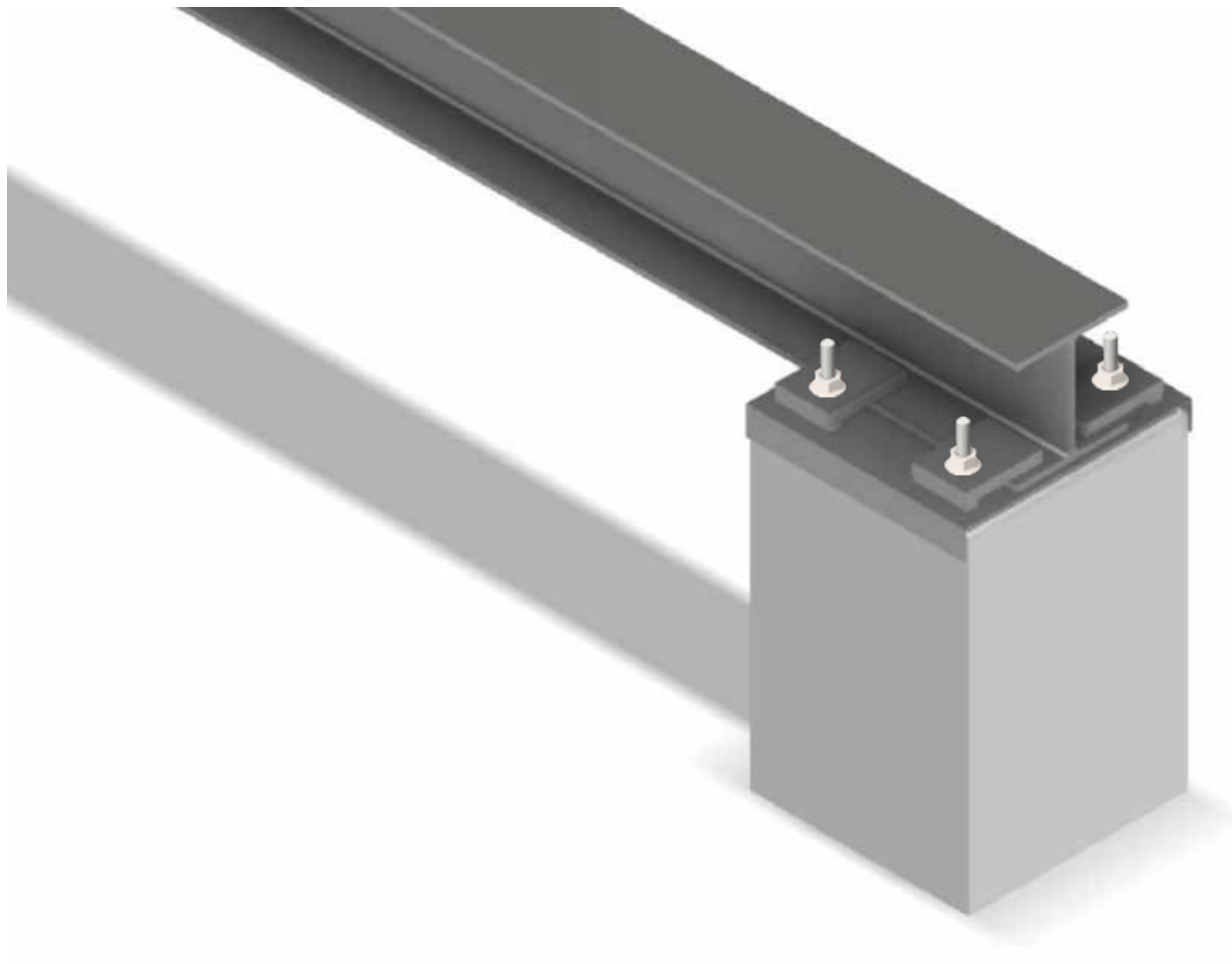
Insulation applied



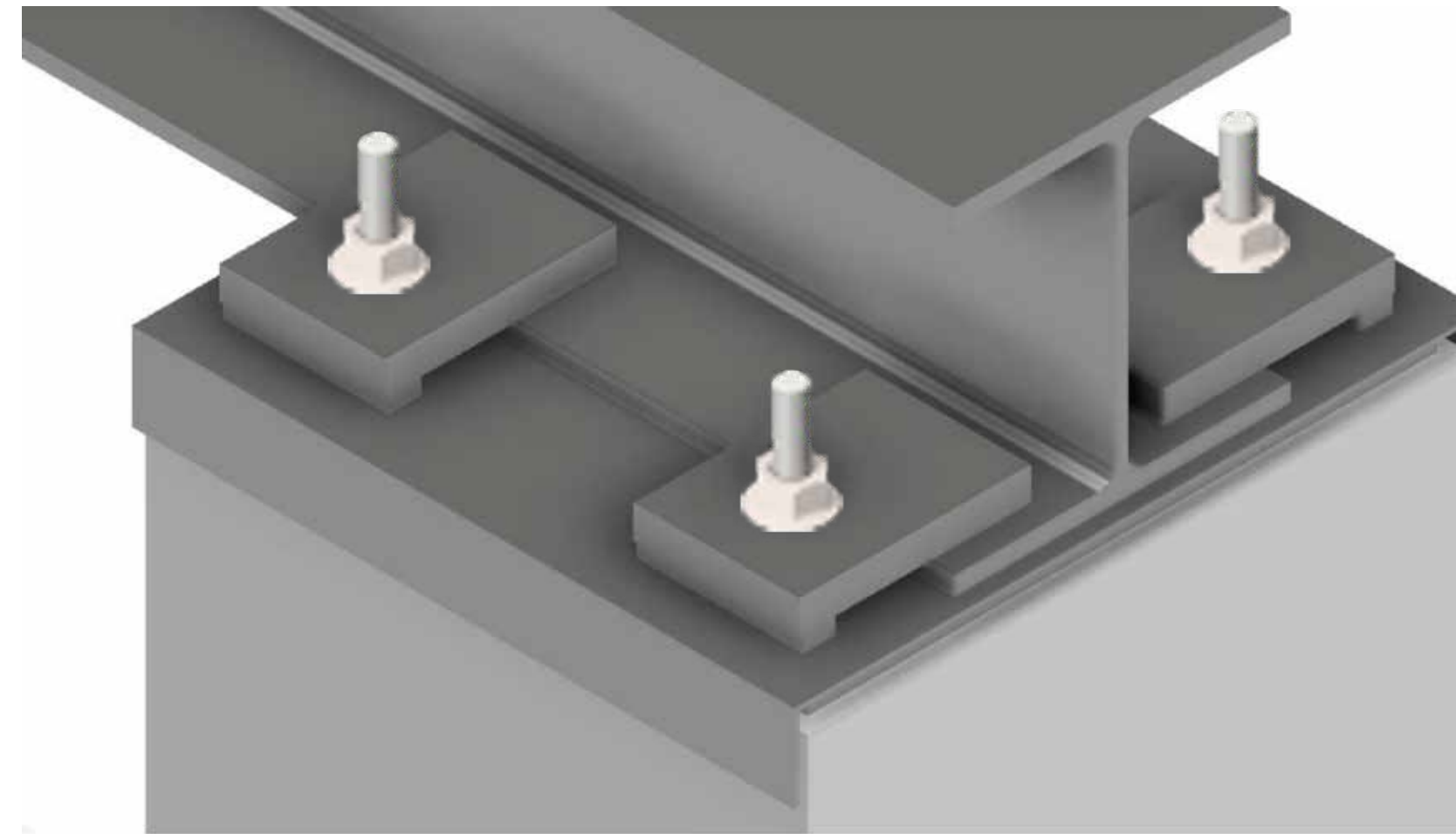
Bed plates installed and levelled

Recommended Plinth Detail

Photographs taken during installation / survey visits



Track installed on top of bed plates



Completed track installed

How to contact us

Integral Cradles Ltd / GIND UK

The Beehive Building

Beehive Ring Rd

Gatwick

RH6 0PA

0845 074 2758 | 0800 448 8884

www.i-cradles.com | www.gind.uk

IntegralCradles **GIND | UK**

DESIGN • MANUFACTURE • INSTALLATION • MAINTENANCE